



Gloucestershire College Student Code of Conduct 2025/26

Your enrolment at Gloucestershire College means you are fully accepting of your responsibilities as a student, so please read carefully.

We have a duty to keep Gloucestershire College an environment where all students and staff feel safe. This code of conduct is to help you understand your responsibilities as a student and what you can expect from the College.

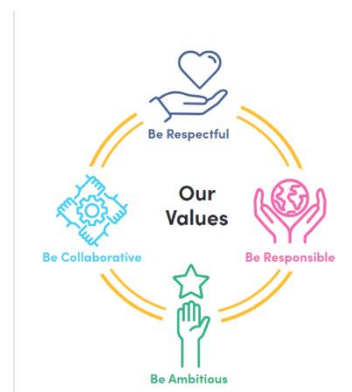
Our college values promote an inclusive environment where we look after ourselves, each other, and our communities. They are personal qualities that demonstrate good character and behaviour, and we expect all students and staff to demonstrate these values.

Gloucestershire College expects students and staff to:

- Be respectful of everyone and the college environment
- Contribute to a welcoming and supportive college community
- Communicate in a professional manner, including via digital platforms (eg. Microsoft Teams or emails.)
- Promote keeping safe by always wearing your GC ID badge at college
- Have high aspirations and expectations of yourself and others
- Follow all college policies and procedures, including health and safety, disciplinary and digital usage
- Demonstrate a positive attitude and seek support when faced with challenges
- Maintain professional boundaries between students and staff
- Act in a way that upholds the good reputation of Gloucestershire College, whether you are at a campus, offsite or online
- Report all safeguarding, welfare and behaviour concerns and not make false reports or allegations

We expect students to:

- Maintain high attendance across all timetabled lessons
- Meet all expectations related to behaviour in and out of the classroom
- Submit college work in a timely manner to the best of your ability
- Report concerns to a staff in an appropriate manner
- Aim to meet and exceed targets
- Develop a broad range of skills beyond vocational course, including literacy, numeracy and employability
- Utilise the support made available to you at College
- Pay fees due to the college where applicable



**PLEASE NOTE THAT ABUSE AND/OR HARASSMENT OF ANY TYPE
TOWARDS OTHERS WILL NOT BE TOLERATED AT THE COLLEGE**

Equality, Diversity, and Inclusion

We expect all students and staff to be tolerant and accepting of each other, regardless of differences such as race, religion, disability, gender or sexual orientation. We do not tolerate any form of harassment, bullying or abuse.

All members of the GC community must be treated with respect. Students and staff are accountable for their actions, both in person and online. It is everyone's responsibility to demonstrate care and empathy for the well-being of others.

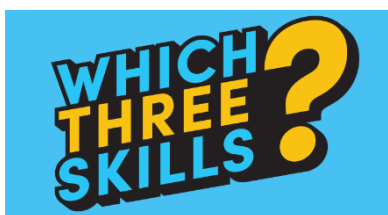


Skill Development and Working with Employers

As you develop your technical knowledge on your course, we expect that students, and the staff who support students demonstrate continuous commitment to the development of employability skills.

Whether you have mandatory work experience on your course, work with an employer whilst you study or engage with businesses, we expect the modelling of college values to continue outside of campus.

For all FE learners studying with us, we support them to develop 3 key skills in line with industry expectations.



All FE learners will be developing their confidence and resilience as they train to be professionals in a given sector, alongside two other industry relevant skills.

As a college we will make clear to you the expectations of you on the course and provide the support for the opportunities to develop. It is the student's responsibility to make the most of these opportunities and harness this to their

advantage.

IT and Digital Usage

In College, students can use College IT systems to support learning. The same principles and guidelines apply, and we expect students to follow these rules to help keep themselves safe. In addition, this includes:

- Not damaging or altering IT equipment or systems
- Only use personal college ID and password, and not sharing this with others
- Not accessing any unauthorised sites or chat rooms that contain abusive, sexist, pornographic or unlawful materials
- Not engaging in communication with extremist organisations or accessing extremist content online
- It is strictly prohibited to take or share images or footage of another person without their explicit permission. This rule applies to all settings, including classrooms, labs, social areas, and online platforms.

For everyone's safety, college IT and digital equipment has safeguarding monitoring software installed. Please be aware this is monitored continuously, and improper use can lead to supportive and disciplinary interventions as required.



If there is a reason to prevent you from adhering to this code of conduct, support is available at the College. Please speak to any member of staff, visit the Student Hub or email info@gloscol.ac.uk.

Breaches of the code of conduct could result in disciplinary action being taken.